



Barry Lawrence Ruderman Antique Maps Inc.

7407 La Jolla Boulevard
La Jolla, CA 92037

www.raremaps.com

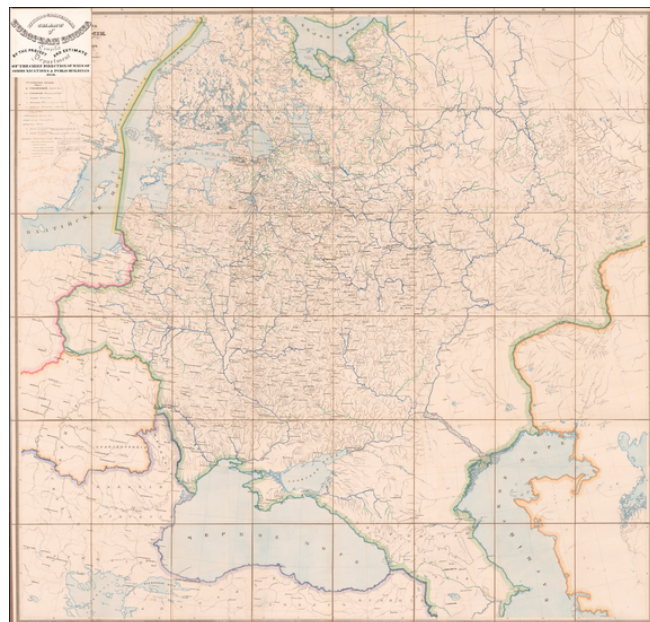
(858) 551-8500
blr@raremaps.com

**[European Russia] Гидрографическая Карта Европейской Россіи. Составлена
Департаментом Проэентовъ И СМѢтъ Главнаго Управления Путей Сообщения и
Публичныхъ Зданій | Hydrographical Chart of European Russia Compiled by the
Project and Estimate Department of the Chief Direction of Ways of Communication &
Public Buildings 1846.**

Stock#: 61005
Map Maker: Russian Ministry of
Communications

Date: 1846
Place: St. Petersburg
Color: Hand Colored
Condition: VG+
Size: 69.5 x 73 inches

Price: \$ 2,800.00



Description:

An Empire Connected by Rivers.

Large-format Russian-language map of European Russia, focusing on the ever-expanding project to connect all of European Russia through its navigable rivers and canals.

From the 18th to the 20th centuries, the primary public works projects in Russia were a series of canals intended to connect Russia's major rivers and in doing so make the whole country traversable by commercial vessels. This map lays out the grand ambition of that project, illustrating European Russia's navigable rivers, unnavigable rivers, and canals.

An overland road connecting St. Petersburg and Moscow is painted in a neat orange line. The fact that this was individually called out on the map highlights the extent to which the country relied on its waterways for long-distance, large-scale transportation.

This example is substantially enriched by the inclusion of an early (19th century) onlaid English translation



**Barry Lawrence Ruderman
Antique Maps Inc.**

7407 La Jolla Boulevard
La Jolla, CA 92037

www.raremaps.com

(858) 551-8500
blr@raremaps.com

**[European Russia] Гидрографическая Карта Европейской Россіи. Составлена
Департаментом Проэентовъ И СМѢтъ Главнаго Управления Путей Сообщения и
Публичныхъ Зданій | Hydrographical Chart of European Russia Compiled by the
Project and Estimate Department of the Chief Direction of Ways of Communication &
Public Buildings 1846.**

of the title and manuscript translation of the key from Russian to English.

Detailed Condition:

Hand-colored engraved folding map, dissected into 48 sheets and laid on original linen. House in contemporary blue paper box. Near-contemporary onlaid sheet translating the title into English, similarly-dated manuscript translations of the key.