



**Barry Lawrence Ruderman
Antique Maps Inc.**

7407 La Jolla Boulevard
La Jolla, CA 92037

www.raremaps.com

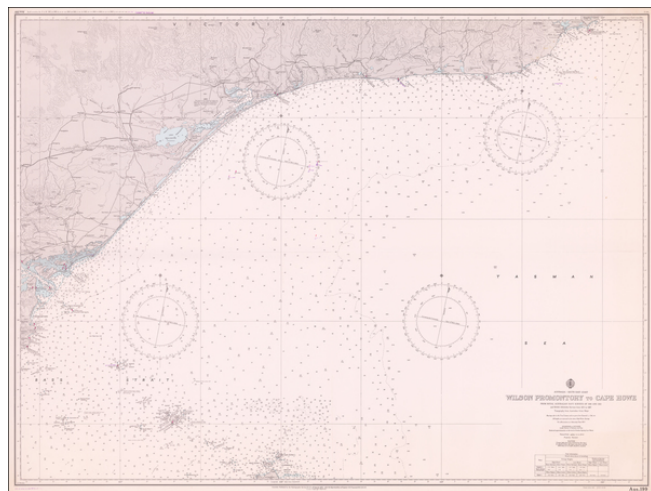
(858) 551-8500
blr@raremaps.com

**Australia -- South East Coast Wilson Promontory to Cape Howe From Royal Navy
Surveys of 1949 and 1953 . . .**

Stock#: 60857
Map Maker: Royal Australian Navy
Hydrographic Office

Date: 1955
Place: Australia
Color: Uncolored
Condition: VG+
Size: 45 x 33.5 inches

Price: SOLD



Description:

Fine sea chart extending from Cape Howe Marine National Park to Wilson Promontory, prepared for the Royal Australian Navy.

Detailed Condition: