



**Barry Lawrence Ruderman
Antique Maps Inc.**

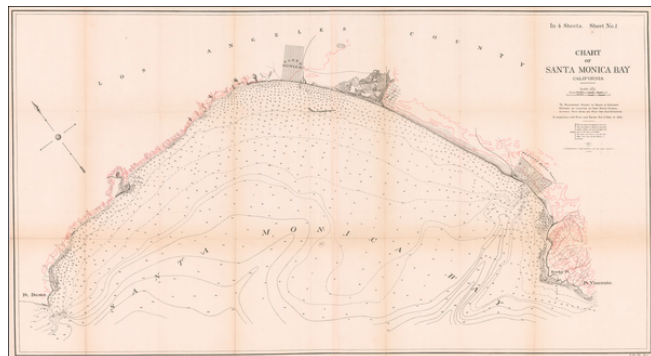
7407 La Jolla Boulevard
La Jolla, CA 92037

www.raremaps.com

(858) 551-8500
blr@raremaps.com

Chart of Santa Monica Bay California . . . 1890

Stock#: 60026
Map Maker: U.S. Army Corps of Engineers
Date: 1890
Place: Washington
Color: Uncolored
Condition: VG
Size: 42.5 x 23 inches
Price: SOLD



Description:

Fine 19th Century Sea Chart of Santa Monica Bay

Detailed 4 sheet map of Santa Monica Bay, illustrating a report considering the feasibility of locating a deep water harbor in Santa Monica Bay, conducted by the Army Corps of Engineers in 1890.

The full title of the map is: *Chart of Santa Monica Bay California. To Accompany Report of Board of Engineer Officers on Location of a Deep Water Port Between Port Dume and Point San Juan Capistrano . . . 1890.*

The finest large format map of Santa Monica Bay published in the 19th Century.

Detailed Condition:

Minor toning along folds.