



Barry Lawrence Ruderman Antique Maps Inc.

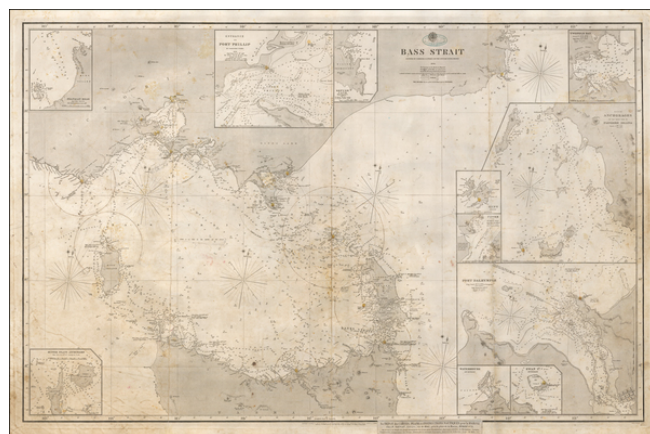
7407 La Jolla Boulevard
La Jolla, CA 92037

www.raremaps.com

(858) 551-8500
blr@raremaps.com

Bass Strait Surveyed by Commander J.L. Stokes and The Officers of the H.M.S. Beagle 1843.

Stock#: 57792
Map Maker: British Admiralty
Date: 1844 (additions to 1858)
Place: London
Color: Uncolored
Condition: VG
Size: 37.5 x 25 inches
Price: \$ 2,900.00



Description:

With Hand Drawn Annotations Showing Contemporary Use At Sea

Annotated example of the 1843 edition of the British Admiralty Chart of the strait between Melbourne and Tasmania, revised and improved to 1844 and 1858.

The map is based upon the explorations and surveys of Commander John Lort Stokes and the officers of the H.M.S. Beagle 1843. The chart shows both the fine details of Stokes work (and prior explorations), along with the vast swaths of coastline still unexplored on the western and eastern sections of the chart.

The chart includes insets of the Entrance to Port Philip, Refuge Cove, Franklin Road, Hunter Island, Waterhouse, Swan Island, Port Dalrymple, the west side of Flinders' Island, the Kent Islands, Coves in Murray's Pass and Twofold Bay.

John Lort Stokes (1811-1885) joined the British Navy in 1824. He joined the crew of the H.M.S. Beagle, where he served under various commanders, including the period from 1831 to 1836, when Charles Darwin undertook his voyages.

In 1837, Stokes was commissioned by the British Hydrographic Office to chart unknown parts of the Australian coastline aboard the Beagle and later became the ship's commander in 1841. Through his travels, Stokes circumnavigated Australia twice, discovered the Fitzroy, Albert, and Flinders rivers, and charted the legendary graveyard of sailing ships known as Bass Strait. During the survey of the Timor Sea in 1839, Stokes undertook the closer examination of what is now the Northern Territory coast. He was the first to discover and name the Victoria River and Port Darwin (named for Charles Darwin). Upon his return



**Barry Lawrence Ruderman
Antique Maps Inc.**

7407 La Jolla Boulevard
La Jolla, CA 92037

www.raremaps.com

(858) 551-8500
blr@raremaps.com

**Bass Strait Surveyed by Commander J.L. Stokes and The Officers of the H.M.S. Beagle
1843.**

to England, he authored *Discoveries in Australia, with an account of the coasts and rivers explored and surveyed during the voyage of the Beagle, 1837-1843* which was published in 1846.

French bookseller's label: "Au Depot des Cartes, Plans et Instructions Nautiques pour la Marine Chez P. Sauvat, Libraire..."

Detailed Condition:

Some foxing and soiling.