



# Barry Lawrence Ruderman Antique Maps Inc.

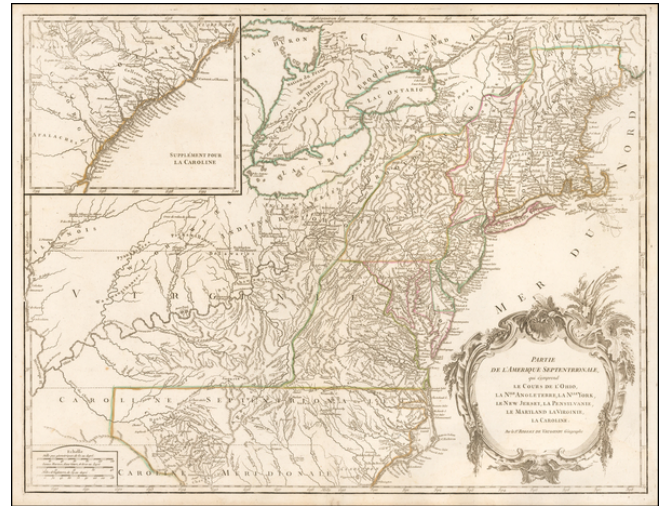
7407 La Jolla Boulevard  
La Jolla, CA 92037

[www.raremaps.com](http://www.raremaps.com)

(858) 551-8500  
[blr@raremaps.com](mailto:blr@raremaps.com)

## Partie De L'Amerique Septentrionale... Le Cours De L'Ohio, La N.lle Angleterre, a Nlle York, le New Jersey, La Pensylvanie, Le Maryland, Le Virginie, La Carolina . . . .

**Stock#:** 57253  
**Map Maker:** de Vaugondy  
**Date:** 1755 circa  
**Place:** Paris  
**Color:** Outline Color  
**Condition:** VG+  
**Size:** 25 x 19 inches  
**Price:** SOLD



### Description:

Nice example of De Vaugondy's map of the English Colonies in America, extending south to South Carolina.

The map provides exceptional detail throughout, extending the Mississippi and Illinois Rivers in the west. The map tracks the course of the Ohio from its confluence with the Mississippi to its headwaters in New York. The Old Northwest and Ohio are dominated by Indian tribes. The information used on this map was garnered from indigenous sources immediately prior to the commencement of the French and Indian War.

The map is especially noteworthy for its Transappalachian information. Extends north to Penobscot Bay and South to Wilmington/Cape Fear, with an inset extending to Amelia Island and Jacksonville (unnamed).

### Detailed Condition: