



**Barry Lawrence Ruderman
Antique Maps Inc.**

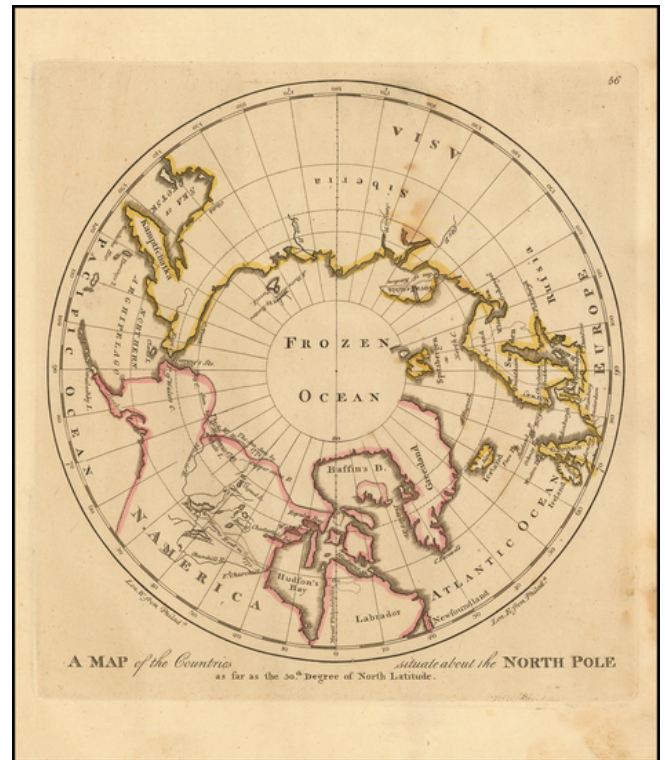
7407 La Jolla Boulevard
La Jolla, CA 92037

www.raremaps.com

(858) 551-8500
blr@raremaps.com

A Map of the Countries situate about the North Pole as far as the 50th Degree of North Latitude

Stock#: 51657
Map Maker: Carey
Date: 1814
Place: Philadelphia
Color: Outline Color
Condition: VG
Size: 10.5 x 10 inches
Price: SOLD



Description:

Early American map showing the extent of explorations in the North Pole, with emphasis on the efforts to find a Northwest passage and Hearne's and MacKenzie's routes.

Detailed Condition:

Some staining.