



**Barry Lawrence Ruderman
Antique Maps Inc.**

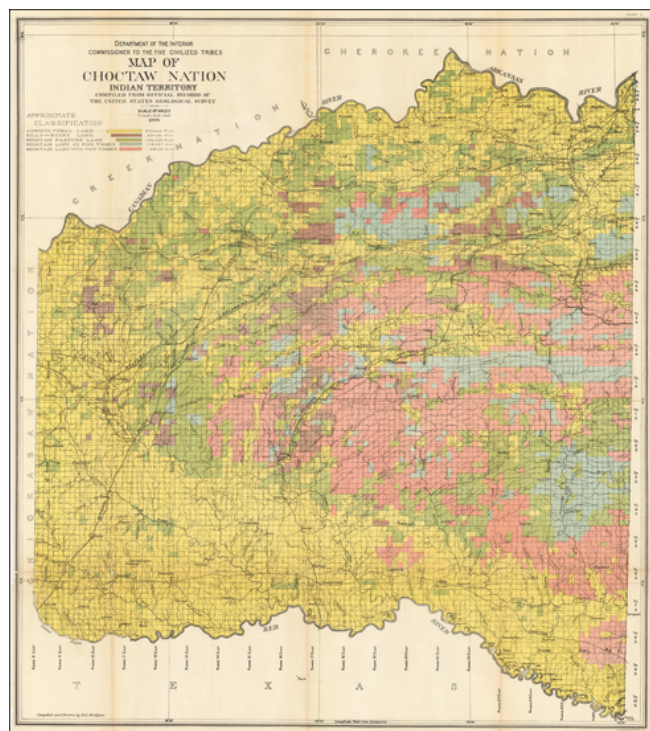
7407 La Jolla Boulevard
La Jolla, CA 92037

www.raremaps.com

(858) 551-8500
blr@raremaps.com

**Map of the Choctaw Nation Indian Territory Compiled From Official Records of The
United States Geological Survey . . . 1906**

Stock#: 48392
Map Maker: United States Department of the Interior
Date: 1906
Place: Washington
Color: Color
Condition: VG
Size: 28 x 24 inches
Price: SOLD



Description:

Striking map of the Choctaw Nation lands in Indian Territory, showing the Approximate Classifications of lands.

The map depicts the various land classifications in the Choctaw Nation, including Agricultural, Prairie, Hilly and Mountain Lands and Lands with and without Pine Timber. The map also depicts towns, roads, rivers, and other details.

Detailed and decorative for the period.

Detailed Condition:

Several folds splits and tears, expertly repaired on verso.