



# Barry Lawrence Ruderman Antique Maps Inc.

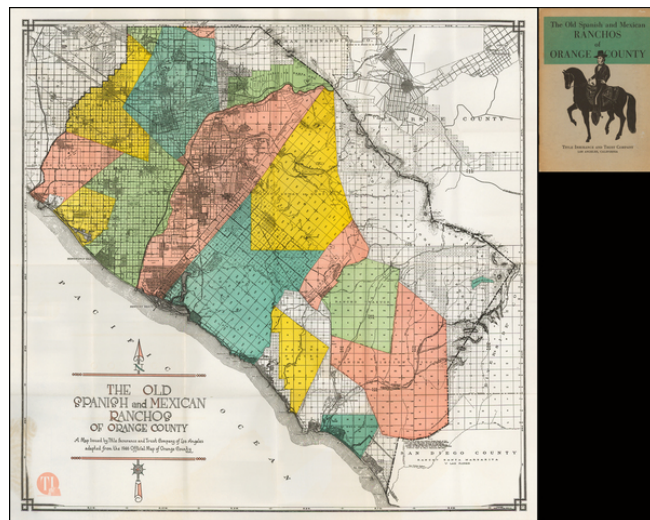
7407 La Jolla Boulevard  
La Jolla, CA 92037

[www.raremaps.com](http://www.raremaps.com)

(858) 551-8500  
[blr@raremaps.com](mailto:blr@raremaps.com)

## The Old Spanish and Mexican Ranchos of Orange County A Map issued by Title Insurance & Trust Company of Los Angeles adapted from the 1946 Official Map [with text pamphlet]

**Stock#:** 48345  
**Map Maker:** Title Insurance & Trust Company  
**Date:** 1955  
**Place:** Los Angeles  
**Color:** Color  
**Condition:** Fine  
**Size:** 21 x 21 inches  
**Price:** SOLD



### Description:

Detailed map of Orange County, locating approximately 20 ranchos, super-imposed over a modern map of Orange County, circa 1946.

Accompanied by an 18 page text by WW Robinson, including text about each of the Ranchos.

Interest in the Spanish and Mexican Ranchos and the lack of good maps from the period, make promotional pieces of this nature a wonderful revelation.

### Detailed Condition: