



# Barry Lawrence Ruderman Antique Maps Inc.

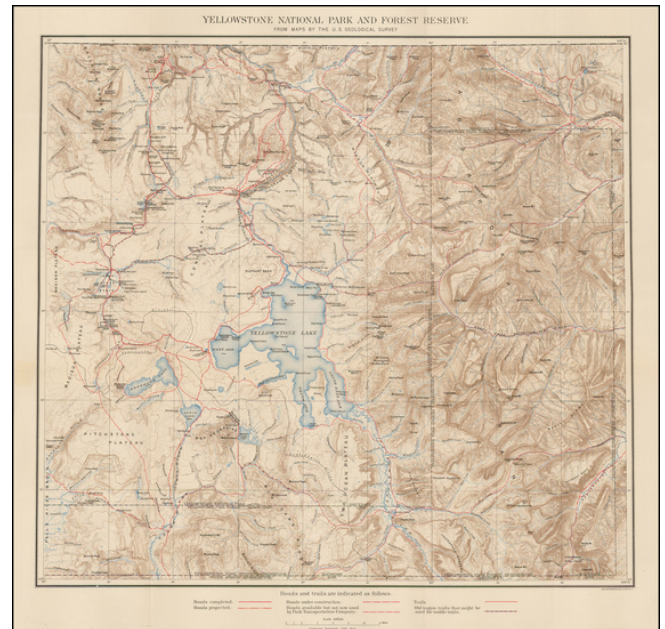
7407 La Jolla Boulevard  
La Jolla, CA 92037

[www.raremaps.com](http://www.raremaps.com)

(858) 551-8500  
[blr@raremaps.com](mailto:blr@raremaps.com)

## Yellowstone National Park and Forest Reserve From Maps By The U.S. Geological Survey

**Stock#:** 48181  
**Map Maker:** U.S. Geological Survey  
**Date:** 1890  
**Place:** Washington, D.C.  
**Color:** Color  
**Condition:** VG+  
**Size:** 18.5 x 19.5 inches  
**Price:** SOLD



### Description:

Finely detailed topographical map of Yellowstone Park plus the region to the east up to Bighorn County (now Park County).

Includes significant topographical detail with contour intervals at 100 feet and a scale of 1 inch = 4 miles.

The Upper, Shoshone, Gibbon, and Heart Lake Geyser Basins are shown; Mud Geysers and Mammoth Hot Springs are named. Old Faithful Hotel is noted.

### Detailed Condition: