



Barry Lawrence Ruderman Antique Maps Inc.

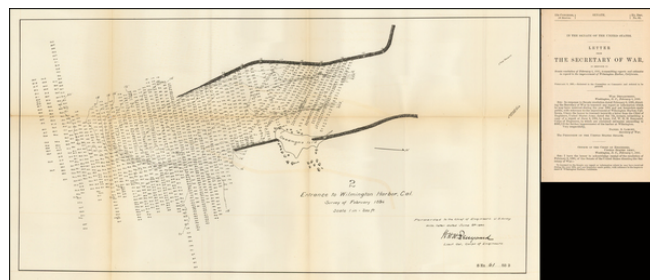
7407 La Jolla Boulevard
La Jolla, CA 92037

www.raremaps.com

(858) 551-8500
blr@raremaps.com

Entrance to Wilmington Harbor, Survey of February 1894 [California]

Stock#: 47227rca
Map Maker: U.S. Army Corps of Engineers
Date: 1894
Place: Washington
Color: Uncolored
Condition: VG+
Size: 25 x 12 inches
Price: SOLD



Description:

One of two maps accompanying a report of the Secretary of War, regarding the improvement of Wilmington Harbor.

This map focuses on the end of the break-water, which includes Deadman's Island. Filled with hundreds of soundings.

Prepared for the US Army Corps of Engineers, under the Direction of Lt. Col. W.H.H. Benyaurd, Corps of Engineers.

Detailed Condition: