



Barry Lawrence Ruderman Antique Maps Inc.

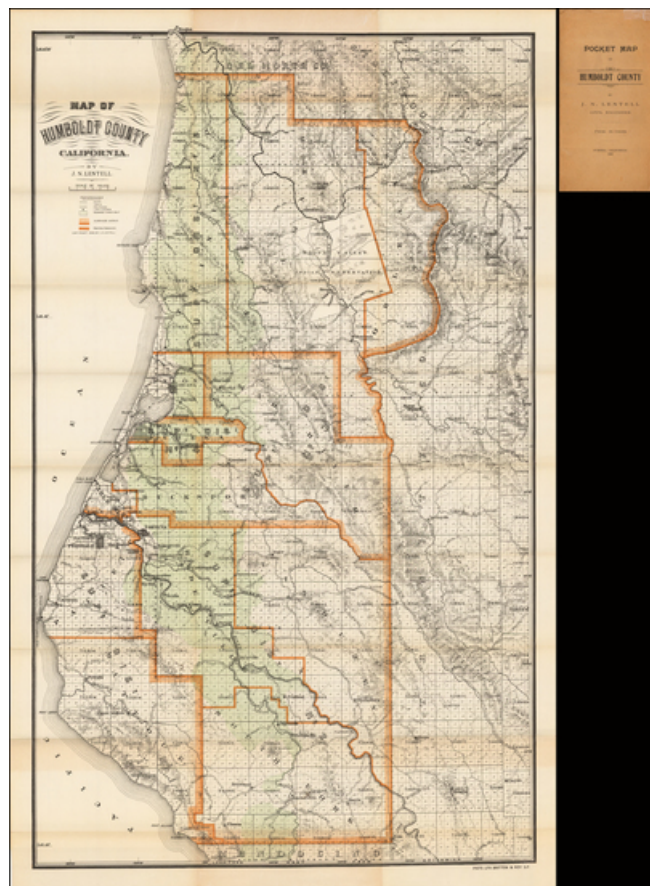
7407 La Jolla Boulevard
La Jolla, CA 92037

www.raremaps.com

(858) 551-8500
blr@raremaps.com

Map of Humboldt County by J.N. Lentell

Stock#: 46586
Map Maker: Britton & Rey / Lentell
Date: 1909
Place: Eureka
Color: Color
Condition: VG+
Size: 36 x 22 inches
Price: SOLD



Description:

Rare separately issued map of Humboldt County, California, published in Eureka.

The map provides a fine overview of the county, with towns, roads, trails, railroads, lighthouses and Redwood Timber Forests specifically noted.

JN Lentell's work including maps of Humboldt and Mendocino Counties, as well as a plan of the town of Eureka.

The map is quite rare. An 1881, 1898 and 1903 edition are listed in OCLC (one recorded example of each). We previously offered a 1901 edition of the map, which was considerably smaller than this map, previously owned by the AT&SF. Lentell seems to have revised the map in later years, which was republished by Britton & Rey.



**Barry Lawrence Ruderman
Antique Maps Inc.**

7407 La Jolla Boulevard
La Jolla, CA 92037

www.raremaps.com

(858) 551-8500
blr@raremaps.com

Map of Humboldt County by J.N. Lentell

We note that the Huntington Library holds a copy of this edition of the map, lacking the original printed covers and with the date given as 1909?.

Detailed Condition:

Folding map with original printed covers.