



**Barry Lawrence Ruderman
Antique Maps Inc.**

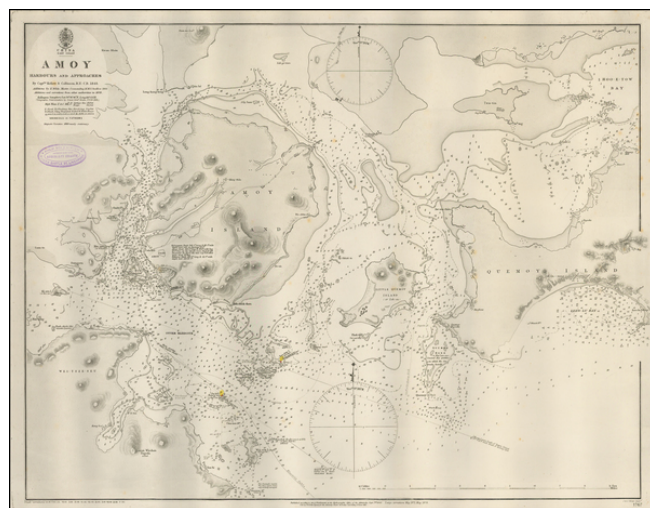
7407 La Jolla Boulevard
La Jolla, CA 92037

www.raremaps.com

(858) 551-8500
blr@raremaps.com

**China East Coast -- Amoy Harbours and Approaches By Captns. Kellett & Collinson,
R.N.: C.B. 1843 . . . 1878**

Stock#: 43753
Map Maker: British Admiralty
Date: 1878 (1890)
Place: London
Color: Uncolored
Condition: VG
Size: 24.5 x 18.5 inches
Price: SOLD



Description:

Detailed map of Amoy Island (Xiamen) and vicinity, published by the British Admiralty in London.

Xiamen is one of the major cities on the southeast coast of China and a part of the Fujian provinces.

Detailed Condition: