



# Barry Lawrence Ruderman Antique Maps Inc.

7407 La Jolla Boulevard  
La Jolla, CA 92037

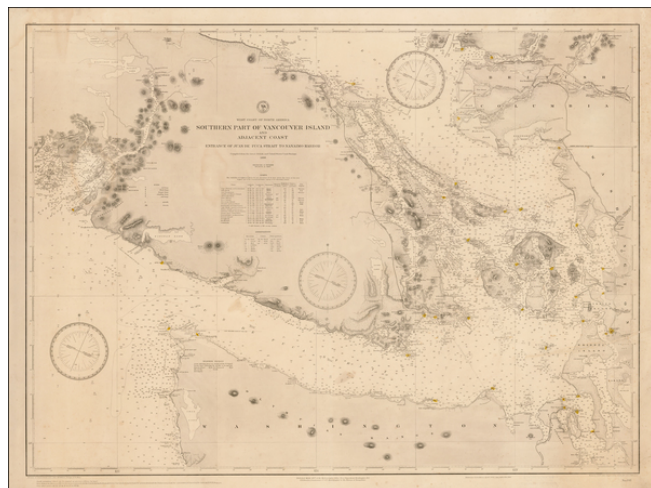
[www.raremaps.com](http://www.raremaps.com)

(858) 551-8500  
[blr@raremaps.com](mailto:blr@raremaps.com)

---

## Southern Part of Vancouver Island and Adjacent Coast Entrance of Juan de Fuca Strait to Nanimo Harbor Compiled from the latest British and United States Coast Survey 1886

**Stock#:** 42542  
**Map Maker:** British Admiralty  
**Date:** 1886 (1895)  
**Place:** London  
**Color:** Uncolored  
**Condition:** VG  
**Size:** 36.5 x 27 inches  
**Price:** SOLD



### Description:

Highly detailed large-scale chart of the southern tip of Vancouver Island surrounded by the Strait of Georgia and the Strait of Juan de Fuca, published by the British Admiralty.

The map extends to include the northwest corner Washington State and as far north as the city of Vancouver. Numerous towns, points, ports, and capes are located along the coasts, including Victoria, the capital of British Columbia. The waters are filled with soundings, anchorages, shoals, rocks, buoys, and navigational information.

Two tables below the title list the lighthouses in the region and the abbreviations for the ground materials found below the surface of the water. The chart was "compiled from the latest British and United States Coast Surveys" in 1886, with extensive corrections in 1892, 1893 and 1895.

Drawn by G. R. Bechler and engraved by J. Enthoffer and J. L. Hazzard.

### Detailed Condition:

Minor soiling.