



**Barry Lawrence Ruderman
Antique Maps Inc.**

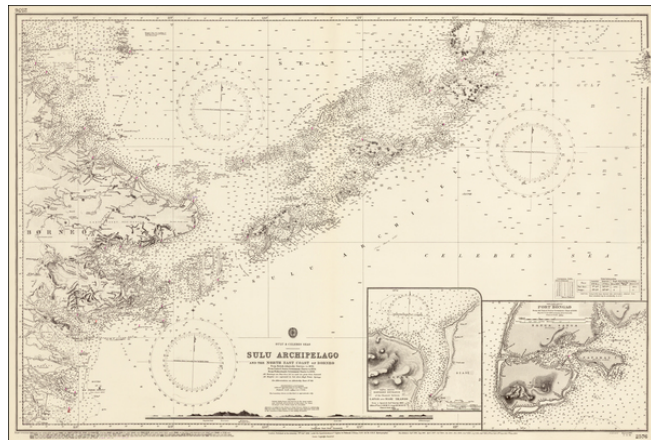
7407 La Jolla Boulevard
La Jolla, CA 92037

www.raremaps.com

(858) 551-8500
blr@raremaps.com

**Sulu Archipelago and the North East Coast of Borneo From British Admiralty. Surveys
to 1892, From United States Government Charts to 1934. From Netherlands
Government Charts to 1936.**

Stock#: 42303
Map Maker: British Admiralty
Date: 1936 (1972)
Place: London
Color: Uncolored
Condition: VG+
Size: 40 x 27 inches
Price: SOLD



Description:

Detailed map of the Sulu Archipelago, with insets of Port Bongao, and the Tapul Group Entrance between Lapak and Siasi Islands,

Detailed Condition: