



**Barry Lawrence Ruderman  
Antique Maps Inc.**

7407 La Jolla Boulevard  
La Jolla, CA 92037

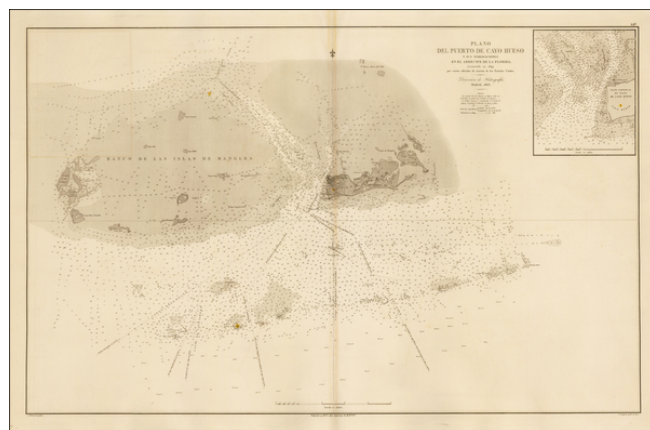
[www.raremaps.com](http://www.raremaps.com)

(858) 551-8500  
[blr@raremaps.com](mailto:blr@raremaps.com)

---

**Plano Del Puerto De Cayo Hueso y sus Inmediaciones en el Arrecife de la Florida  
Levantado en 1849 . . . 1863**

**Stock#:** 39578  
**Map Maker:** Direccion Hidrografica de Madrid  
**Date:** 1863  
**Place:** Madrid  
**Color:** Uncolored  
**Condition:** VG+  
**Size:** 39 x 25 inches  
**Price:** SOLD



**Description:**

Fine large format map of the Florida Keys, centered on Key West and with a large inset of the western end of Key West, published in Madrid by the Spanish Hydrographical Office.

The map is based on a survey by the United States Coast Survey, undertaken in 1849. An inset details the western end of the island, showing Fort Zachary Taylor. The lighthouses are marked in color.

The map shows hundreds of soundings, as well as sailing directions for approaches to Key West.

The chart is very rare. This is the second example we have seen on the market in more than 20 years.

**Detailed Condition:**