



Barry Lawrence Ruderman Antique Maps Inc.

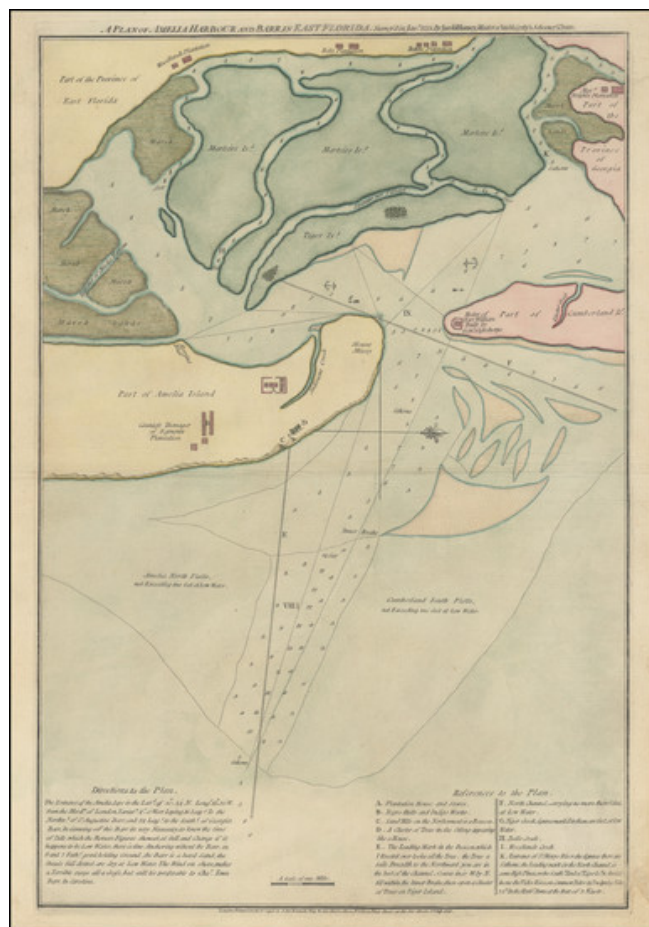
7407 La Jolla Boulevard
La Jolla, CA 92037

www.raremaps.com

(858) 551-8500
blr@raremaps.com

[Florida / Georgia Coastline] A Plan of Amelia Harbour and Bar, in East Florida, Surveyed by Jacob Blamey, Master of His Majesty's Schooner St. John

Stock#: 38028
Map Maker: Sayer & Bennett
Date: 1776
Place: London
Color: Hand Colored
Condition: VG
Size: 21 x 28 inches
Price: \$ 5,400.00



Description:

A Revolutionary War Florida Rarity.

Fine wide margined example of Sayer & Bennett's chart of Amelia Harbor and Bar, based upon a survey conducted under the direction of Jacob Blamey in January 1775.

The map is oriented with west at the top.

On Amelia Island, the Countess Dowager of Egmont's Plantation is shown, along with Mount Misery, Morriss Bluff, "Negro Hutts and Indigo Works," and a beacon. The Ruins of Fort William, built by General Oglethorpe are shown on Cumberland Island. Woodland's Plantation, Bells Plantation and Ralphs



**Barry Lawrence Ruderman
Antique Maps Inc.**

7407 La Jolla Boulevard
La Jolla, CA 92037

www.raremaps.com

(858) 551-8500
blr@raremaps.com

**[Florida / Georgia Coastline] A Plan of Amelia Harbour and Bar, in East Florida,
Surveyed by Jacob Blamey, Master of His Majesty's Schooner St. John**

Plantation are shown in East Florida at the top of the map, while Messr Wright's Plantation is shown in Georgia at the top right.

The chart includes an extensive set of directions, soundings, and a reference key identifying 10 locations.

The map was included in Sayer & Bennett's *The North-American Pilot, Part the Second*. The source volume is scarce in itself. We are aware of three copies of the map on the market in the last 35 years.

Detailed Condition:

Expert repairs to several marginal tears in the top and bottom right corners, not affecting printed image.