



Barry Lawrence Ruderman Antique Maps Inc.

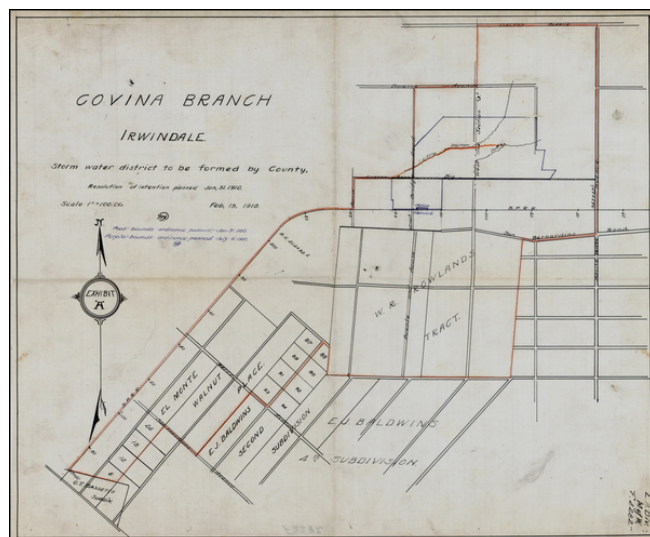
7407 La Jolla Boulevard
La Jolla, CA 92037

www.raremaps.com

(858) 551-8500
blr@raremaps.com

Covina Branch Irwindale. Storm water district formed by County . . . 1910 (shows the W.R. Rowland's Tract, E.J. Baldwin's Subdivision and O.T. Basset's Subdivision)

Stock#: 31729df
Map Maker: Pacific Electric Railway
Date: 1910
Place: Los Angeles
Color: Outline Color
Condition: VG
Size: 21 x 17 inches
Price: SOLD



Description:

Detailed map of Irwindale, prepared by to show the locations of the boundaries of the newly passed ordinances in 1910 adjusting the city boundaries.

The location of the New Irwindale Station is also included, as the lines of the Southern Pacific Railroad.

Locates the lands owned by several major land owners, including W.R. Rowland and E. J. Baldwin.

Detailed Condition:

Mix of traced map and manuscript additions.