



**Barry Lawrence Ruderman  
Antique Maps Inc.**

7407 La Jolla Boulevard  
La Jolla, CA 92037

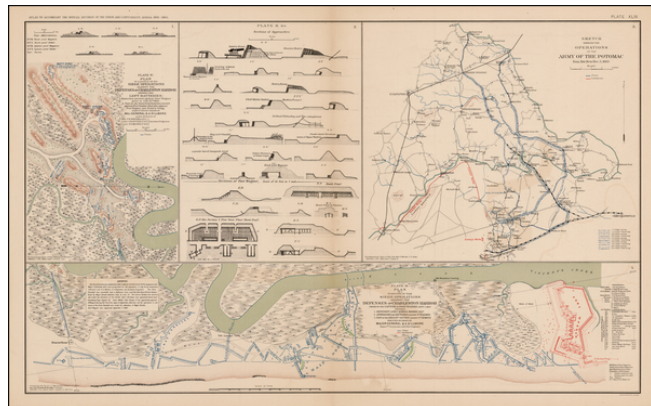
[www.raremaps.com](http://www.raremaps.com)

(858) 551-8500  
[blr@raremaps.com](mailto:blr@raremaps.com)

---

**Plan of a Portion of the Siege Operations Against The Defenses of Charleston Harbor  
Showing The Left Batteries (and) . . . Prior to the Capture of Fort Wagner (and)  
Operations of the Army of the Potomac**

**Stock#:** 30957  
**Map Maker:** Bien & Co.  
**Date:** 1891 -95  
**Place:** New York  
**Color:** Color  
**Condition:** VG  
**Size:** 27 x 16 inches  
**Price:** SOLD



**Description:**

Highly detailed set of maps showing the battlefield positions, roads, rivers, towns, etc., primarily covering Charleston and the battle fought north of Chancellorsville.

The maps are full of Battlefield information, fortification information, and a host of other information utilized by the War Department during the Civil War. The map was issued to accompany the monumental *Atlas To Accompany The Official Records of the Union and Confederate Armies. 1861-1865*. The publication of this work was the most comprehensive compilation of maps of the Civil War.

**Detailed Condition:**