



**Barry Lawrence Ruderman
Antique Maps Inc.**

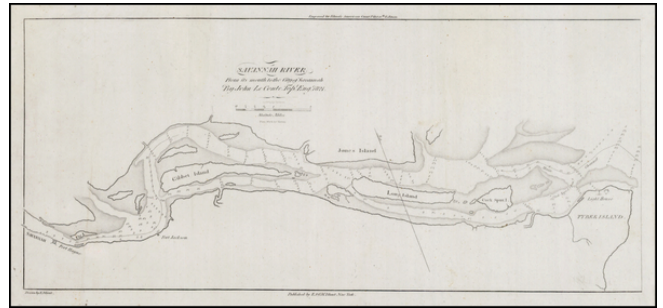
7407 La Jolla Boulevard
La Jolla, CA 92037

www.raremaps.com

(858) 551-8500
blr@raremaps.com

**Savannah River from its mouth to the City of Savanna By John Le Conte. Topl. Engr.
1821**

Stock#: 30753
Map Maker: Blunt
Date: 1827
Place: New York
Color: Uncolored
Condition: VG
Size: 16 x 7 inches
Price: SOLD



Description:

Scarce early plan of the Savannah River, from Savannah and Fort Hayne to Tybee Island.

Includes soundings, shoals, channels and other details. Fort Jackson, Fig Island, Gibbet Island, Jones Island, Long Island, Cock Spur Island and other place names shown, including what appears to be 2 lighthouses on Tybee Island.

Detailed Condition: