



Barry Lawrence Ruderman Antique Maps Inc.

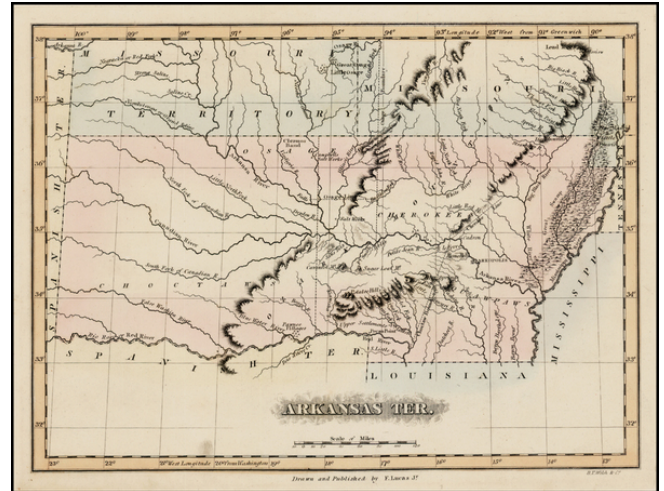
7407 La Jolla Boulevard
La Jolla, CA 92037

www.raremaps.com

(858) 551-8500
blr@raremaps.com

Arkansas Ter.

Stock#: 29463
Map Maker: Lucas Jr.
Date: 1822
Place: Baltimore
Color: Hand Colored
Condition: VG+
Size: 11 x 8.5 inches
Price: SOLD



Description:

One of the rarest and most sought after of all maps of Arkansas Territory, being one of only a few maps to show Arkansas Territory in its double wide configuration, along with an adjoining glimpse at a portion of Missouri Territory and Spanish Territory (Texas).

Shows many Indian Tribes, Villages, Rivers, Cherokee Line, Osage Line, several Salt Works, trading posts, & other early landmarks. Not listed in Phillips. Arkansas Territory was first organized in 1819. Striking example of Fielding Lucas' fine work, which distinguished him as the best publisher of the era. His maps are printed on a higher quality paper than contemporary maps by Carey & Lea and demonstrate a superior engraving quality and more attractive coloring style. Lucas' maps are highly desirable and increasingly scarce.

A fine example of this highly desirable map, issued by one of the most important early American publishers, which are now virtually unobtainable in atlas form and rarely appear on the market in individual maps.

Detailed Condition: