



**Barry Lawrence Ruderman  
Antique Maps Inc.**

7407 La Jolla Boulevard  
La Jolla, CA 92037

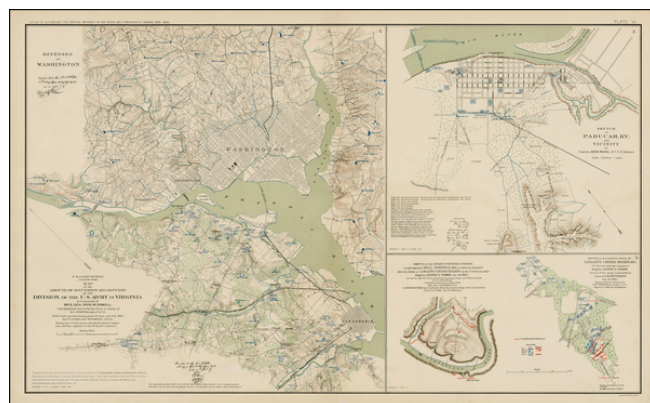
[www.raremaps.com](http://www.raremaps.com)

(858) 551-8500  
[blr@raremaps.com](mailto:blr@raremaps.com)

---

**Defenses of Washington [with] Sketch of Pducah, KY and Vicinity [with] Sketch of the  
Battle-field of Logan's Cross-Roads, KY... and Mill Springs, KY...**

**Stock#:** 26587  
**Map Maker:** Bien & Co.  
**Date:** 1891 -95  
**Place:** New York  
**Color:** Color  
**Condition:** VG  
**Size:** 27 x 16 inches  
**Price:** SOLD



**Description:**

Highly detailed set of maps showing the battlefield positions, roads, rivers, towns, etc., in and around Washington DC and depicting several battles fought in Kentucky.

The maps are full of Battlefield information, fortification information, and a host of other information utilized by the War Department during the Civil War. The map was issued to accompany the monumental *Atlas To Accompany The Official Records of the Union and Confederate Armies. 1861-1865*. The publication of this work was the most comprehensive compilation of maps of the Civil War.

**Detailed Condition:**