



**Barry Lawrence Ruderman  
Antique Maps Inc.**

7407 La Jolla Boulevard  
La Jolla, CA 92037

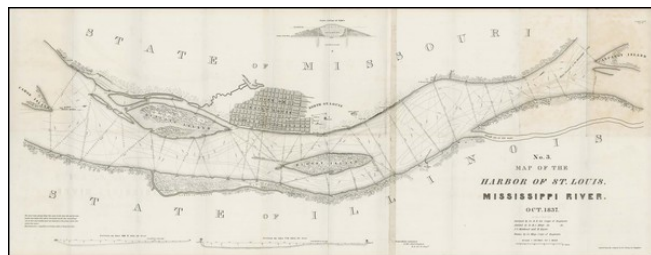
[www.raremaps.com](http://www.raremaps.com)

(858) 551-8500  
[blr@raremaps.com](mailto:blr@raremaps.com)

---

**Map of the Harbor of ST. Louis, Mississippi River. Oct. 1837. Surveyed by Lt. R.E. Lee,  
Corps of Engineers**

**Stock#:** 23344  
**Map Maker:** Lee  
**Date:** 1837  
**Place:** Washington  
**Color:** Uncolored  
**Condition:**  
**Size:**  
**Price:** SOLD



**Description:**

Detailed map of the area around St. Louis, showing Robert E. Lee's proposed dike to protect St. Louis from floods on the Mississippi.

**Detailed Condition:**