



Barry Lawrence Ruderman Antique Maps Inc.

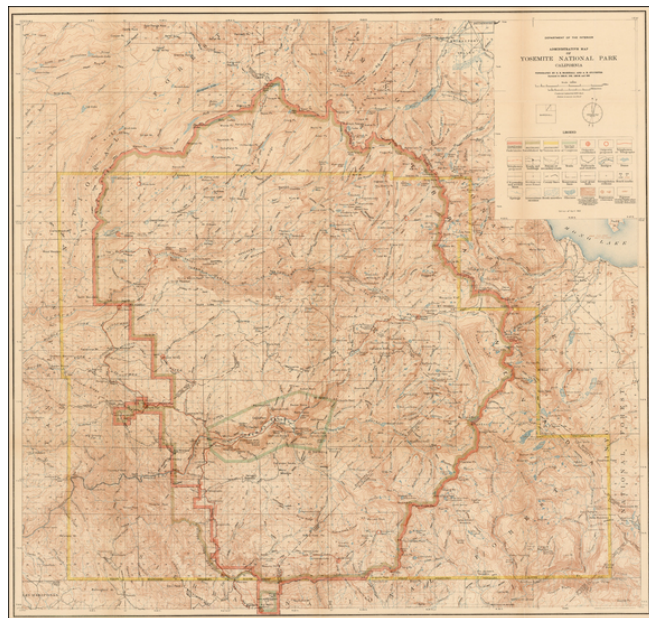
7407 La Jolla Boulevard
La Jolla, CA 92037

www.raremaps.com

(858) 551-8500
blr@raremaps.com

Administrative Map of Yosemite National Park California . . .

Stock#: 19602
Map Maker: United States Department of the Interior
Date: 1910
Place: Washington
Color: Color
Condition: VG+
Size: 29 x 25 inches
Price: SOLD



Description:

Highly detailed map of Yosemite, published by the Department of the Interior from surveys conducted by Marshall and Sylvester during the years 1893-94, 1896, 1898-99, and 1905.

This updated edition was published in April, 1910. It is a beautifully drawn chart that shows in great detail the topography, watershed and development of the park. Large legend identifies 28 natural and manmade features including boundaries, outposts, telephone and telegraph lines, roads, trails, railroads, contours, glaciers, springs, and more.

Detailed Condition: