



Barry Lawrence Ruderman Antique Maps Inc.

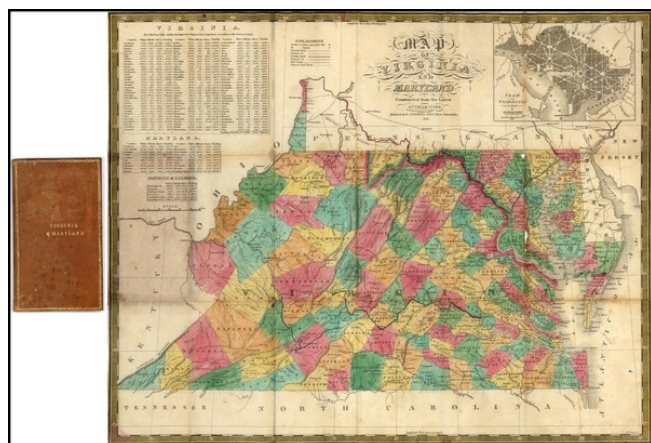
7407 La Jolla Boulevard
La Jolla, CA 92037

www.raremaps.com

(858) 551-8500
blr@raremaps.com

Map of Virginia and Maryland Constructed from the latest Authorities . . . 1831 [Pocket Map]

Stock#: 15444
Map Maker: Mitchell
Date: 1831
Place: Philadelphia
Color: Hand Colored
Condition: VG
Size: 22 x 18 inches
Price: SOLD



Description:

Nice example of the first state of Mitchell's pocket map of Virginia and Maryland, with the original folding covers. The map is highly detailed, and includes towns, principal roads, common roads, canals, proposed canals, railroads, proposed railroads, mountains, rivers, lakes and a host of other details. Inset map of the Washington City and Georgetown, along with a population table by county for Virginia, Maryland and DC, based upon the results of the 1820 Census, which identifies populations by whites, free blacks and slaves in each of the counties.

In 1831, Samuel Augustus Mitchell prepared an updated version of Anthony Finley's American Atlas. Finley in turn had attempted to compete with the monumental work of Henry Schenk Tanner, first issued in 1822. As with Finley and Tanner before him, Mitchell also utilized the plates from the atlas to produce separately issued pocket maps. These pocket maps are among the best engraved and detailed separately issued maps of the regions covered which are available to collectors.

SA Mitchell would go on to a thriving business publishing maps and atlases, with his son continuing in business and the Mitchell family name becoming one of the dominant names in the commercial map trade for the next 50 years.

Detailed Condition:

Usual minor soiling at folds. Minor loss along one fold (visible in photograph). Archivaly repaired on verso. Generally a good example.