



**Barry Lawrence Ruderman
Antique Maps Inc.**

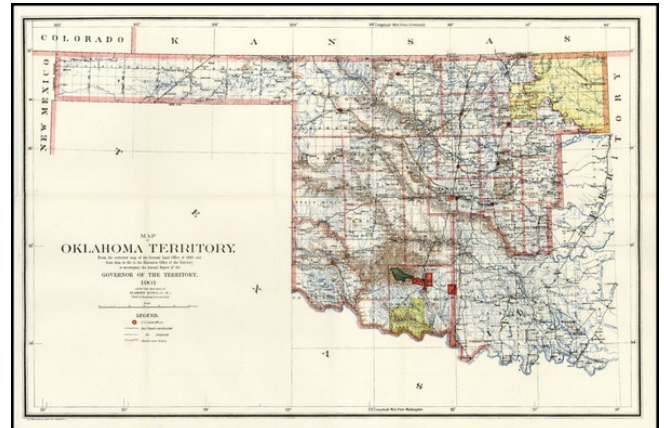
7407 La Jolla Boulevard
La Jolla, CA 92037

www.raremaps.com

(858) 551-8500
blr@raremaps.com

**Map of Oklahoma Territory. From the Ccorrected map of the General Land Office of
1898 and from data on file in the Executive Office of the Territory . . . 1901**

Stock#: 15178
Map Maker: General Land Office
Date: 1901
Place: Washington
Color: Outline Color
Condition: VG+
Size: 22 x 15 inches
Price: SOLD



Description:

Detailed Condition: