



**Barry Lawrence Ruderman  
Antique Maps Inc.**

7407 La Jolla Boulevard  
La Jolla, CA 92037

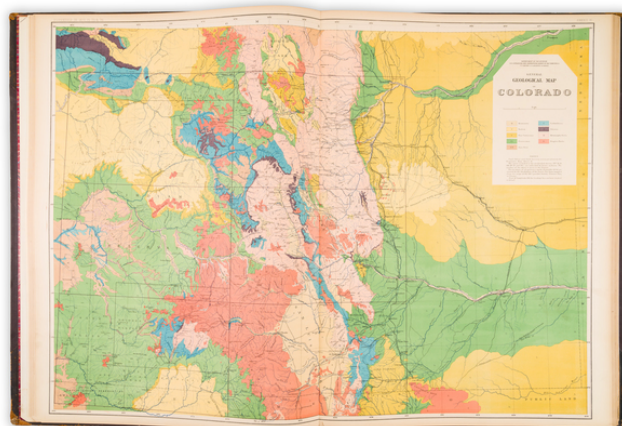
[www.raremaps.com](http://www.raremaps.com)

(858) 551-8500  
[blr@raremaps.com](mailto:blr@raremaps.com)

---

**[ Colorado Atlas -- Presentation Copy ] Geological and Geographical Atlas of Colorado  
and Portions of Adjacent Territory**

**Stock#:** 101702  
**Map Maker:** Hayden / U.S. Geological Survey  
**Date:** 1877  
**Place:** Washington, D.C.  
**Color:** Color  
**Condition:** VG  
**Size:** 19.5 x 27 inches (binding)  
**Price:** \$ 4,500.00



**Description:**

***A Milestone Work in the Mapping of Colorado and the Transmississippi West***

***Presented by Congressman Samuel Baldwin Chittenden to his Son in 1878***

First edition of Ferdinand Vandeveer Hayden's *Geological Atlas of Colorado*, a cornerstone of 19th-century cartographic and geological studies.

Published in 1877, the atlas represents the culmination of exhaustive fieldwork conducted from 1873 to 1876, under Hayden's astute direction as the United States Geologist-in-charge. The work provides an invaluable window into the intricate geological and topographical nuances of Colorado and adjacent territories at a pivotal moment in the American West's development.

The atlas comprises a collection of beautifully printed maps and panoramic views, all executed by the noted American lithographer Julius Bien, a pioneer in chromolithography who produced an American edition of Audubon's famous *Birds of America* on the same scale as the original, known as the Bien edition. The topographical and geological sheets, offering a dual perspective on the region's landscape, are meticulously executed. The topographical maps, delineated on a scale of four miles to one inch, reflect the natural and man-made features of the terrain, while the geological maps, on the same scale, reveal the underlying structure and composition of the earth's crust. This duality provides a comprehensive visual narrative of Colorado's diverse physiography. The two sheets of exquisite tinted panoramic views are by William Henry Holmes.



## Barry Lawrence Ruderman Antique Maps Inc.

7407 La Jolla Boulevard  
La Jolla, CA 92037

[www.raremaps.com](http://www.raremaps.com)

(858) 551-8500  
[blr@raremaps.com](mailto:blr@raremaps.com)

---

### [ Colorado Atlas -- Presentation Copy ] Geological and Geographical Atlas of Colorado and Portions of Adjacent Territory

In his classic book, *Exploration and Empire*, William H. Goetzmann has written extensively on the Hayden Surveys, highlighting how the Colorado surveys brought science to the practical aid of Western settlement:

*An important turning point in the history of the Hayden Surveys was reached in 1873. Shifting attention from the spectacular but overworked Yellowstone region, Hayden proposed to revert to more practical activities and focus on the promising territory of Colorado, which lay directly in the path of settlement and which in the 1870s was in the midst of a mining boom. In a letter to his superior, Secretary of the Interior Columbus Delano, Hayden stated his reasons for this change.... "There is probably no portion of our continent, at the present time, which promises to yield more useful results, both of a practical and scientific character. This region seems to be unoccupied at this time, as far as I am aware, by any other survey under the Government, and the prospect of its rapid development within the next five years, by some of the most important railroads in the West. renders it very desirable that its resources be made known to the world at as early a date as possible" - Exploration and Empire, pages 515-516.*

Indeed, Goetzmann praises Hayden's Colorado Atlas, calling out William Holmes's "marvelous panoramas," and declaring the atlas "better than those produced by Powell and Wheeler."

Wheat concurs, declaring "cartographically, the 1877 Atlas was the highest expression of the labors of the Hayden Survey in Colorado."

The *Geological Atlas of Colorado* serves as a testament to the collective efforts of eminent figures in western exploration, dramatizing the natural grandeur of the Rocky Mountain region through detailed mapping and panoramic views. The primary triangulation, a critical foundation for the maps' accuracy, was initiated by J. T. Gardner and later completed by A. D. Wilson. W. H. Holmes's role in the preparation of the colored sheets underscores the collaborative nature of the project.

The atlas includes the following mapsheets:

1. Triangulation Map of Colorado
2. Drainage Map of Colorado
3. Economic Map of Colorado [color coded: pine forests, quaking aspen groves, gold districts, silver districts, sage and bad lands, and the like]
4. General Geological Map
5. Northwestern Colorado and Part of Utah
6. Northern Central Colorado



## Barry Lawrence Ruderman Antique Maps Inc.

7407 La Jolla Boulevard  
La Jolla, CA 92037

[www.raremaps.com](http://www.raremaps.com)

(858) 551-8500  
[blr@raremaps.com](mailto:blr@raremaps.com)

---

### [ Colorado Atlas -- Presentation Copy ] Geological and Geographical Atlas of Colorado and Portions of Adjacent Territory

7. Central Colorado
8. Western Colorado and Part of Utah
9. Southwestern Colorado and Parts of New Mexico, Arizona and Utah
10. Southern Central Colorado and Part of New Mexico
11. North-Western Colorado and Part of Utah
12. Northern Central Colorado
13. Central Colorado
14. Western Colorado and Part of Utah
15. S.W. Colorado and Parts of New Mexico, Arizona and Utah
16. Southern Central Colorado and Part of New Mexico
17. Geological Sections
18. Geological Sections
19. Panoramic Views: The Pike's Peak Group; View of the Sawatch Range; Central Portion of the Elk Mountains
20. Panoramic Views: The Twin Lakes - Lake Fork of the Arkansas, Showing the Great Moraines; South Western Border of the Mesa Verde, Showing the Sierra el Late in the Distance Looking West Across the Cañon of the Rio Mancos; The Quartzite Group - San Juan Mountains, Looking South West from the Rio Grande Pyramid; The La Plata Mountains, View Looking East From Mt. Hesperus, Showing the Trachyte Mass and Its Relations to the Surrounding Sedimentary Formations.

In sum, Hayden's atlas stands as a key visual work of the Rocky Mountain West, an example of mapmaking and scientific geology put in the service of western expansion.

It was through such works that Americans began to see the unsettled west, in the words of William Goetzmann, "not as a dreadful place to get across, but as a wonderland of nature to be lived in and enjoyed."

#### **Provenance:**

Likely gifted by Samuel Baldwin Chittenden Jr. (1845-1922), a prominent New York City attorney, to the Brooklyn Library, as Chittenden was a director of the library during his lifetime.

#### **Detailed Condition:**

Elephant folio. Contemporary half morocco and cloth. Large gilt-lettered morocco label on front cover. Marbled endpapers. Joints cracked, but covers holding. Spine and corners worn. Neat 19th-century printed library label on front cover. Slight chipping to lower fore-edge corners of last four sheets. Else



**Barry Lawrence Ruderman  
Antique Maps Inc.**

7407 La Jolla Boulevard  
La Jolla, CA 92037

[www.raremaps.com](http://www.raremaps.com)

(858) 551-8500  
[blr@raremaps.com](mailto:blr@raremaps.com)

---

**[ Colorado Atlas -- Presentation Copy ] Geological and Geographical Atlas of Colorado  
and Portions of Adjacent Territory**

internally clean, with all the maps very nice. Title page and legend sheet plus 20 double-page sheets (measuring 37 by 26.5 inches), including ten chromolithographed sheets and two tinted plates. Complete. Manuscript presentation inscription on front fly leaf, from S. B. Chittenden, a U.S. Representative from New York (1873-81), to his son, S. B. Chittenden, Jr.