



Barry Lawrence Ruderman Antique Maps Inc.

7407 La Jolla Boulevard
La Jolla, CA 92037

www.raremaps.com

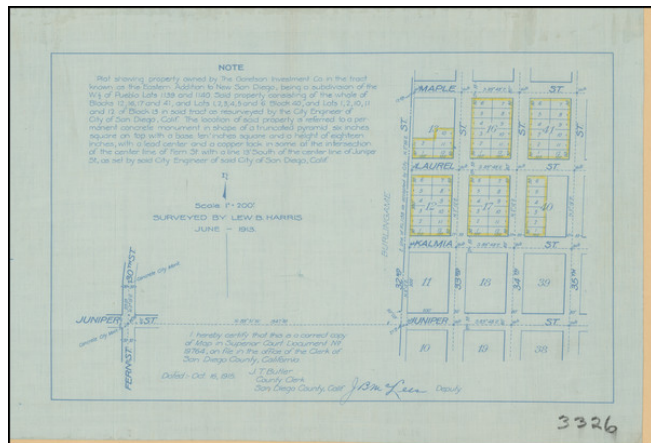
(858) 551-8500
blr@raremaps.com

[Burlingame / South Park Neighborhood -- San Diego]

Stock#: 100970
Map Maker:

Date: 1915
Place: San Diego
Color: Uncolored
Condition: VG
Size: 13.6 x 8.4 inches

Price: \$ 245.00



Description:

Burlingame / South Park

Detailed map of the neighborhood immediately west of the pink sidewalks of Burlingame, in the city of San Diego, originally surveyed by Lew B. Harris in June 1913, detailing property owned by The Gassen Investment Co. in a tract known as the Easterly Addition to New San Diego.

The map outlines the entire layout of specific lots and blocks within the area, specifically noting the entire blocks 126, 127, and 144, and parts of blocks 2, 3, 10, 11, and 12. A particular note mentions that a portion of the land in Blocks 11 and 12 reserved by the City Engineer of San Diego for street purposes is marked by a concrete monument shaped like a truncated pyramid of six inches square on top with a base ten inches square and a height of eighteen inches, aligned with the centerline of Fern St. at a point 50 feet south of the centerline of Juniper St.

The map details the streets bordering or intersecting the property, specifically Juniper, Fern, Kalmia, and Laurel Streets, providing a clear grid structure typical of urban planning layouts of the era. Each lot within the designated blocks is numbered, allowing for clear identification and reference.

The certification at the bottom of the map confirms its accuracy and official status, signed by T. Butler, Deputy, and certified as a correct copy of the original map on file in the office of the Clerk of San Diego County, California, dated October 16, 1915.

This map serves as a document reflecting the urban planning and property ownership of a specific area in early 20th century San Diego, offering insights into the city's development and land use during that period.



**Barry Lawrence Ruderman
Antique Maps Inc.**

7407 La Jolla Boulevard
La Jolla, CA 92037

www.raremaps.com

(858) 551-8500
blr@raremaps.com

[Burlingame / South Park Neighborhood -- San Diego]

Detailed Condition:

Blue line map, printed on drafting linen.