



# Barry Lawrence Ruderman Antique Maps Inc.

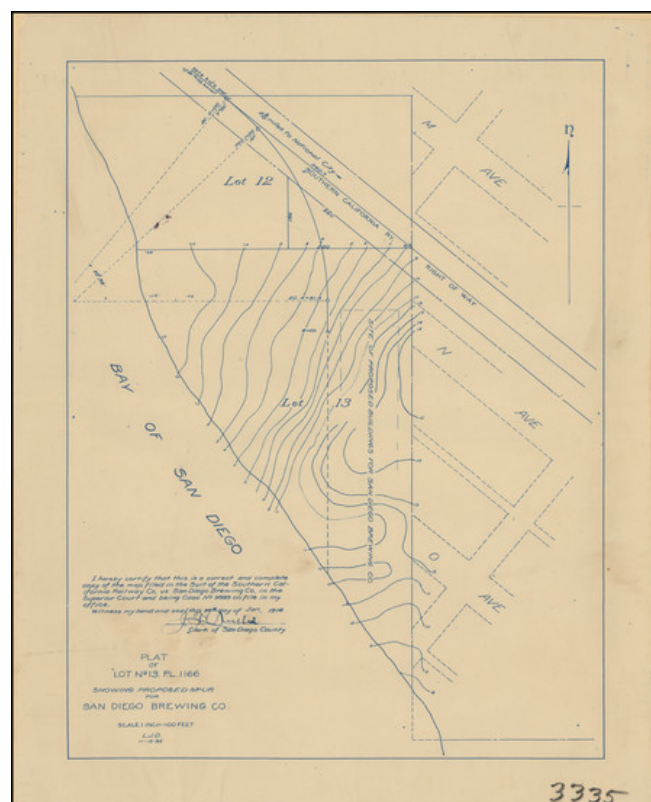
7407 La Jolla Boulevard  
La Jolla, CA 92037

[www.raremaps.com](http://www.raremaps.com)

(858) 551-8500  
[blr@raremaps.com](mailto:blr@raremaps.com)

## [ San Diego's First Brewery ] Plat . . . Showing Proposed Spur For San Diego Brewing Company . . .

**Stock#:** 100687  
**Map Maker:** Anonymous  
**Date:** 1914  
**Place:** San Diego  
**Color:** Uncolored  
**Condition:** VG+  
**Size:** 11.9 x 15.5 inches  
**Price:** \$ 275.00



### Description:

Blue line copy of the original November 15, 1895 (?) map illustrating the area set aside for the San Diego Brewing Company on San Diego Bay. The map was copied for a court case in 1914.

The present map locates the the company's waterfront location in the midst of today's Naval Base San Diego, just south of Chollas Creek and Harbor Drive.

The San Diego Brewing Company, established in 1896 was San Diego County's first commercial brewery. The brewery was financially backed by some of the most affluent individuals in San Diego, notably including John D. Spreckels, whose investment played a crucial role in its establishment and growth. Originally located on 32nd Street in San Diego, the brewery was designed for large-scale operations. By 1906, it operated a state-of-the-art, 100-ton compressor for refrigeration.

In its early years, the San Diego Brewing Company adopted a traditional approach to delivery, using



**Barry Lawrence Ruderman  
Antique Maps Inc.**

7407 La Jolla Boulevard  
La Jolla, CA 92037

[www.raremaps.com](http://www.raremaps.com)

(858) 551-8500  
[blr@raremaps.com](mailto:blr@raremaps.com)

---

**[ San Diego's First Brewery ] Plat . . . Showing Proposed Spur For San Diego Brewing Company . . .**

horse-drawn wagons. This method, while reflective of the era, was soon replaced in 1914 by motor vehicles, signaling a shift towards modernization and a response to the increasing demand.

The brewery's expansive production, reaching 140,000 barrels annually, was not limited to local distribution. It extended its reach beyond San Diego, delivering to saloons and hotel bars while also transporting its beer to distant markets like San Francisco and Arizona via refrigerated rail cars.

Further consolidating its position in the regional beer market, the San Diego Brewing Company acquired several other local breweries, including the notable Mission Brewery. This expansion strategy culminated in 1914 with the brewery rebranding itself as the San Diego Consolidated Brewing Company. The company operated until prohibition.

**Detailed Condition:**