



# Barry Lawrence Ruderman Antique Maps Inc.

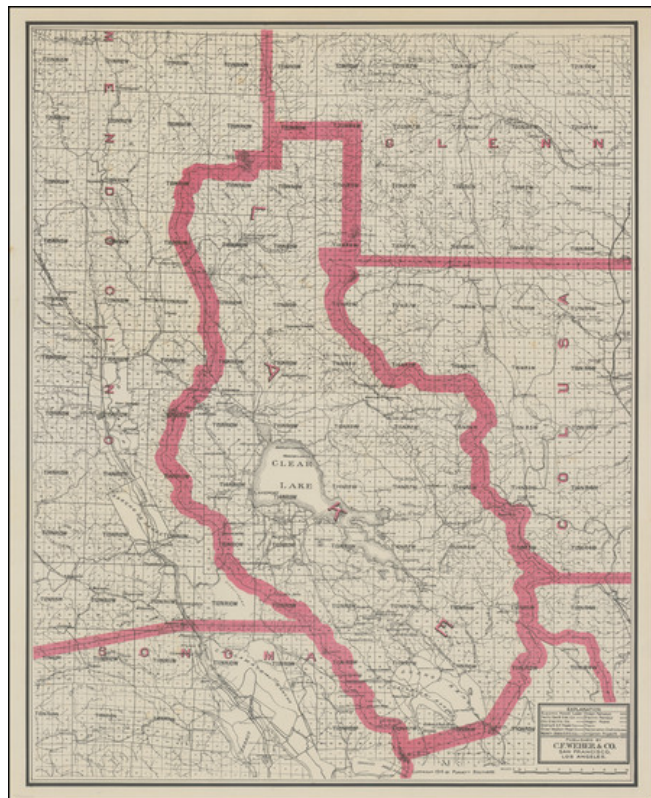
7407 La Jolla Boulevard  
La Jolla, CA 92037

[www.raremaps.com](http://www.raremaps.com)

(858) 551-8500  
[blr@raremaps.com](mailto:blr@raremaps.com)

## (C.F. Weber's Map of Lake County California . . 1914)

**Stock#:** 100620  
**Map Maker:** Punnett Brothers  
**Date:** 1914  
**Place:** Los Angeles  
**Color:** Outline Color  
**Condition:** VG  
**Size:** 18.5 x 23.5 inches  
**Price:** \$ 345.00



### Description:

Separately issued unfolded map of Lake County, published by C.F. Weber.

The map shows early railroads, roads, wagon roads, mines, lakes, mills, and many other details.

Lake County was formed in 1861 from parts of Napa and Mendocino counties, but the area had settlers from at least the 1840s. Lake County has long been known as a farming community. Vineyards were planted in the 1870s. By the early 20th century, the area was earning a reputation for producing some of the world's greatest wines. However, in 1920, Prohibition ended Lake County's wine production. Most of the vineyards were ripped out and replanted with walnut and pear farms.

### Detailed Condition: