



# Barry Lawrence Ruderman Antique Maps Inc.

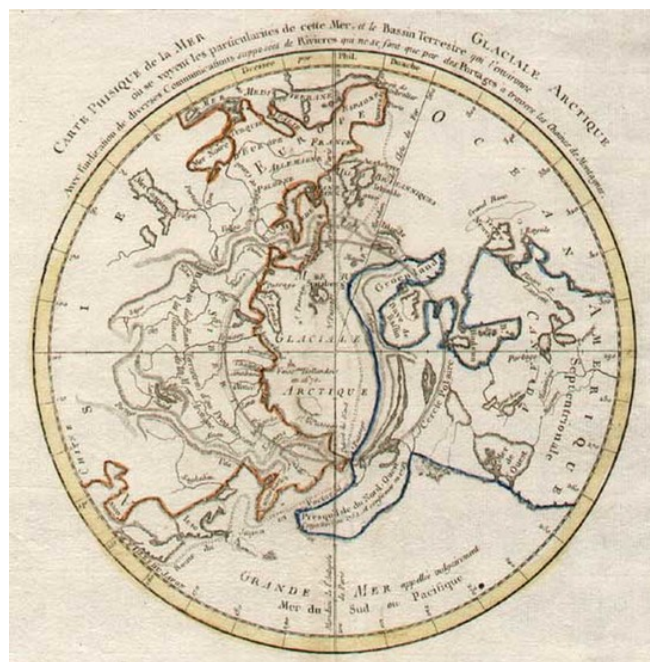
7407 La Jolla Boulevard  
La Jolla, CA 92037

[www.raremaps.com](http://www.raremaps.com)

(858) 551-8500  
[blr@raremaps.com](mailto:blr@raremaps.com)

## Carte Physique de la Mer Glaciale Arctique ou se voyent les particularites de cetter Mer et le Bassin Terrestre... [Bay of the West]

**Stock#:** 0225  
**Map Maker:** Buache  
**Date:** 1753  
**Place:** Paris  
**Color:** Outline Color  
**Condition:** VG  
**Size:** 9 x 8.5 inches  
**Price:** SOLD



### Description:

Seminal map of the Northern Hemisphere from Phillipe Buache's *Considerations geographiques et physiques sur les nouvelles decouvertes au nord de la grande mer...*, one of the most important works on the NW Coast of America of the 18th Century. Buache studied under the elder De L'Isle in Paris. This work, which was intended to illustrate the Russian discoveries in the Northwest, the Northwest Passage and other contemporary French cartographic conclusions regarding the region, was one of the prime catalysts for the mythical bay of the west. This map illustrates both the Bay of the West, a conjectural route from the Atlantic to the Pacific and the prospect of a River route, using portages. A essential map for collectors of the NW Coast of America.

### Detailed Condition: