



Barry Lawrence Ruderman Antique Maps Inc.

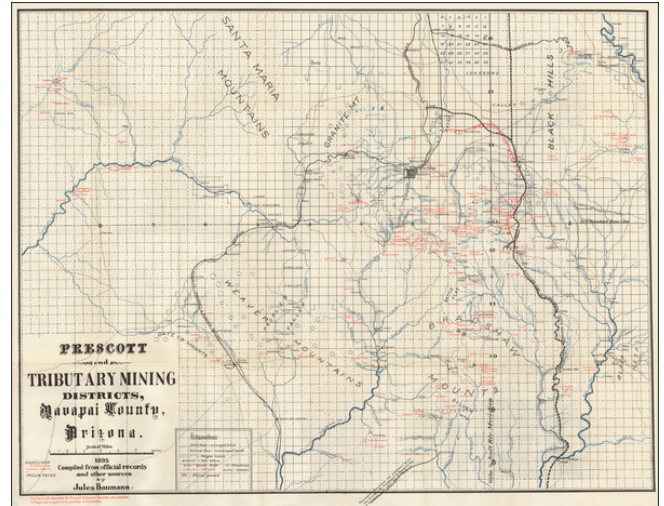
7407 La Jolla Boulevard
La Jolla, CA 92037

www.raremaps.com

(858) 551-8500
blr@raremaps.com

Prescott and Tributary Mining Districts, Yavapai County, Arizona. 1895

Stock#: 0071bm
Map Maker: Baumann
Date: 1895
Place: n.p.
Color: Uncolored
Condition: VG+
Size: 35 x 26.5 inches
Price: SOLD



Description:

Scarce map of Yavapai County, showing the Prescott and Tributary Mining Districts, overprinted to show the lines of the Prescott & Eastern Railroad.

Detailed map locating hundreds of mines, ranches, school houses, towns, railroads, roads, and post offices. Includes Jerome, Prescott, and Congress.

Large script title, rivers and streams over-printed in blue.

Features a red overprinted line and note that "represents the Prescott & Eastern Railroad, now completed to Mayer, and proposed to be extended to Alexandria." The Prescott and Arizona Central R.R. line extending north from Prescott appears to be cancelled through red overprinting.

A very fine example of this map.

Detailed Condition: