



Barry Lawrence Ruderman Antique Maps Inc.

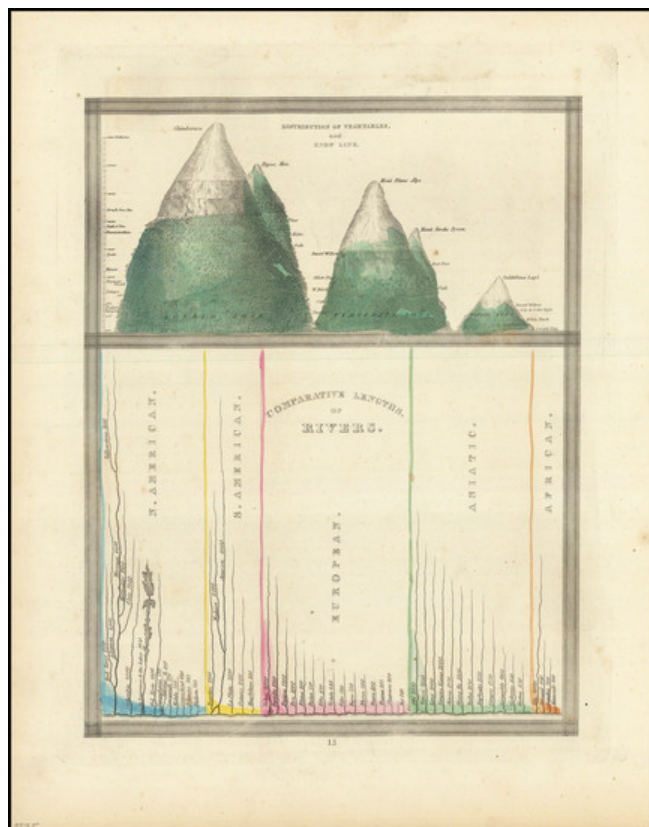
7407 La Jolla Boulevard
La Jolla, CA 92037

www.raremaps.com

(858) 551-8500
blr@raremaps.com

Distribution of Vegetables and Snow Line [with] Comparative Lengths of Rivers

Stock#: 97865
Map Maker: Bradford
Date: 1835
Place: Boston
Color: Hand Colored
Condition: VG+
Size: 8 x 10 inches
Price: \$ 145.00



Description:

One of the earliest obtainable comparative charts published in the United States.

The image is divided into the Torrid, Temperate and Frigid zones.

The graphics are color coded to show North America in Blue, South America in Yellow, Europe in Red, Asia in Green and Africa in Brown.

Detailed Condition: