



**Barry Lawrence Ruderman  
Antique Maps Inc.**

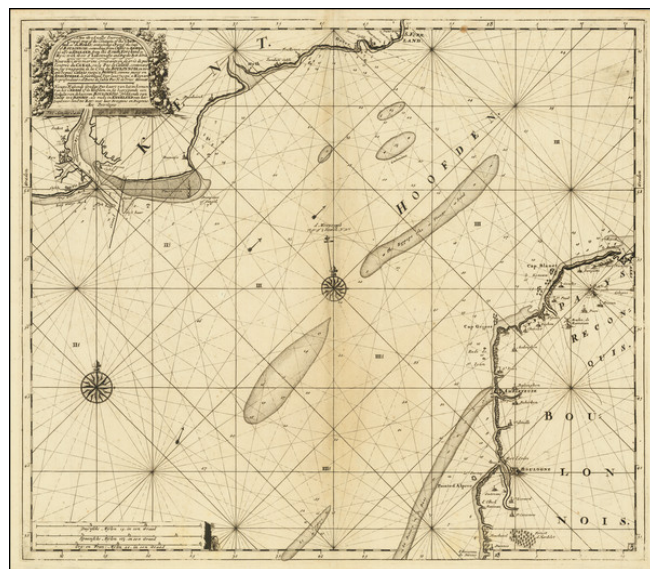
7407 La Jolla Boulevard  
La Jolla, CA 92037

[www.raremaps.com](http://www.raremaps.com)

(858) 551-8500  
[blr@raremaps.com](mailto:blr@raremaps.com)

**[English Channel] A New Gradnally Encreassnig Compass-map of the Comingin of the  
Channel, or the Heads; containing a part of the coast of Boulonnois; extending from  
Callis to Dannes, as also in England, from the South Foreland to Rye; with their  
S'hallownesses and Depths By N. deVries**

**Stock#:** 85127  
**Map Maker:** Van Keulen  
**Date:** 1734  
**Place:** Amsterdam  
**Color:** Uncolored  
**Condition:** VG  
**Size:** 23.5 x 20.5 inches  
**Price:** \$ 245.00



**Description:**

***Dover Straits / Chunnel Tunnel***

Fine example of Gerard Van Keulen's sea chart of the English Channel.

The chart focuses on the the coastline south of Dover to the Rye River and the contiguous coastline between Calais and Boulogne, now the area traversed by the Chunnel Tunnel.

Gerard van Keulen introduced into the 1734 edition of the 'Zee Fakkel' many new plates. One of these is this chart of the Dover Straits between England and France.

**Detailed Condition:**