



Barry Lawrence Ruderman Antique Maps Inc.

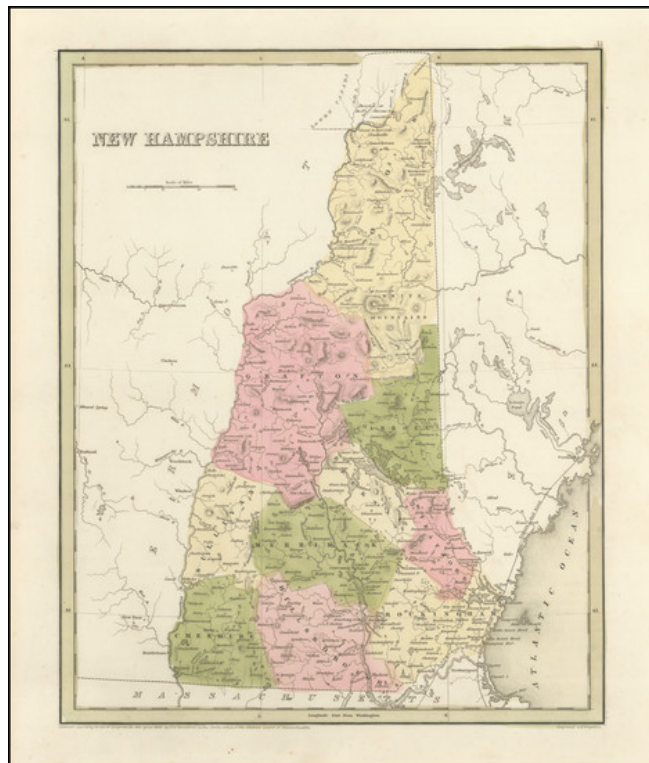
7407 La Jolla Boulevard
La Jolla, CA 92037

www.raremaps.com

(858) 551-8500
blr@raremaps.com

New Hampshire

Stock#: 82522
Map Maker: Bradford
Date: 1838
Place: Boston
Color: Hand Colored
Condition: VG+
Size: 11.5 x 14.5 inches
Price: \$ 245.00



Description:

Interesting and detailed map of New Hampshire from the first edition of Bradford's *Atlas*.

The map is colored by counties and shows towns, rivers, lakes, and other important places.

Detailed Condition:

Engraving on 19th-century wove paper. Original hand-color. Minor foxing at borders not affecting the map image.