



## Barry Lawrence Ruderman Antique Maps Inc.

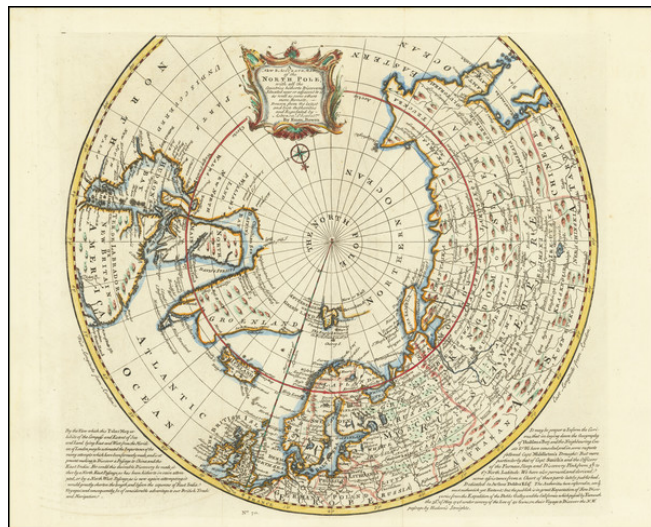
7407 La Jolla Boulevard  
La Jolla, CA 92037

[www.raremaps.com](http://www.raremaps.com)

(858) 551-8500  
[blr@raremaps.com](mailto:blr@raremaps.com)

### A New & Accurate Map of the North Pole, with all the Countries hitherto Discovered . . .

**Stock#:** 77246  
**Map Maker:** Bowen  
**Date:** 1746  
**Place:** London  
**Color:** Hand Colored  
**Condition:** VG+  
**Size:** 16.5 x 15 inches  
**Price:** \$ 650.00



#### Description:

Important Arctic and sub-Arctic map by Emanuel Bowen, showing excellent detail around Hudson Bay, Greenland, Spitzbergen & Northeast Coast of Europe & Asia.

Shows Northeast passage. Shows the discoveries of Barentsz, Baffin, Hudson, Smith, Wager, James and a host of other early explorers.

The map appeared at the height of the so-called Dobbs-Middleton controversy and includes the following note:

*It may be proper to Inform the Curious, that in laying down the Geography of Hudson's Bay, and the Neighbouring Coasts &c We have consulted, and in some respects followed Capt. Middleton's Draught; But more particular that of Capt. Smith's and the Officer of the Furnace Sloop and Discovery Pink from 57 degrees to 67 North Latitude. We have also perused and derived some assistance from a chart of these parts lately published, Dedicated to Arthur Dobbs. The Authorities here referred to, are ye most authentick yet Extant; but the publick is in great Expectation of New Discoveries from the Expedition of the Dobbs Galley and the California which passed by Yarmouth the 31st of May 1746 under convoy of Loo of 40 Guns, on their Voyage to Discover the N.W. passage by Hudson's Streights.*

#### Detailed Condition: