



# Barry Lawrence Ruderman Antique Maps Inc.

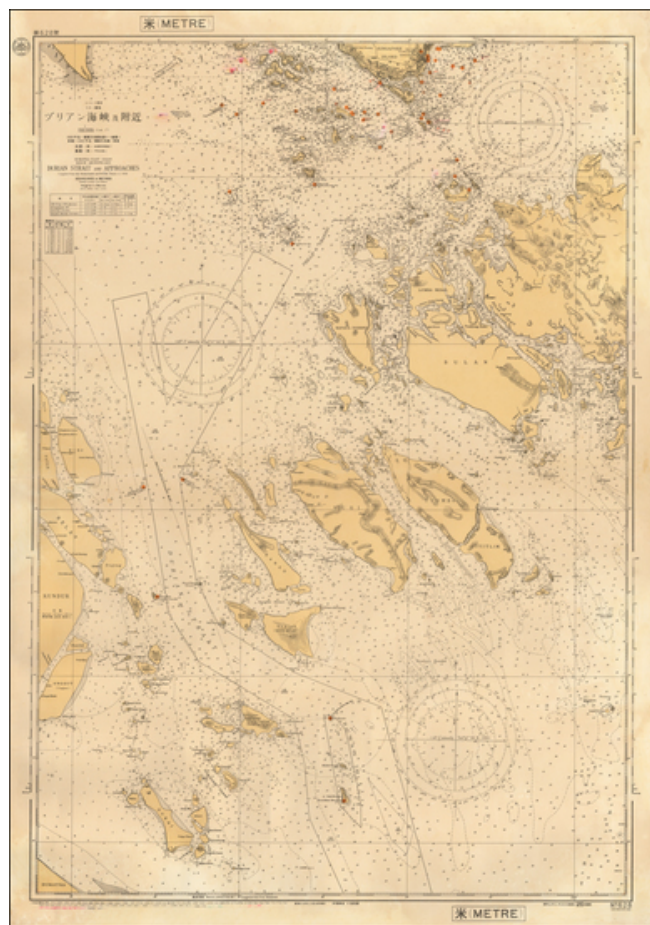
7407 La Jolla Boulevard  
La Jolla, CA 92037

[www.raremaps.com](http://www.raremaps.com)

(858) 551-8500  
[blr@raremaps.com](mailto:blr@raremaps.com)

## (Sinagpore, Strait, Batam Island, etc) - East Coast Riouw Archipelago Durian Strait and Approaches

**Stock#:** 53482  
**Map Maker:** Maritime Safety Agency of Japan  
**Date:** 1948 circa  
**Place:** n.p.  
**Color:** Uncolored  
**Condition:** VG  
**Size:** 37.5 x 26.5 inches  
**Price:** \$ 1,200.00



### Description:

Rare separately issued sea chart of a part of the areas between Singapore Island and the coast of Sumatra, published by the Maritime Safety Agency of Japan shortly after the end of the Second World War.

Major islands shown including Batam, Bulan, Bintan, Sugi, Durian, Rempang, Galang, Citlim, Kaplajernih and Sugibawa.

The map notes that it is based on Dutch and British charts from 1935.

A very unusual chart -- the first we have ever seen.



**Barry Lawrence Ruderman  
Antique Maps Inc.**

7407 La Jolla Boulevard  
La Jolla, CA 92037

[www.raremaps.com](http://www.raremaps.com)

(858) 551-8500  
[blr@raremaps.com](mailto:blr@raremaps.com)

---

**(Sinagpore, Strait, Batam Island, etc) - East Coast Riouw Archipelago Durian Strait and Approaches**

**Detailed Condition:**

Minor soiling and signs of use.