



**Barry Lawrence Ruderman
Antique Maps Inc.**

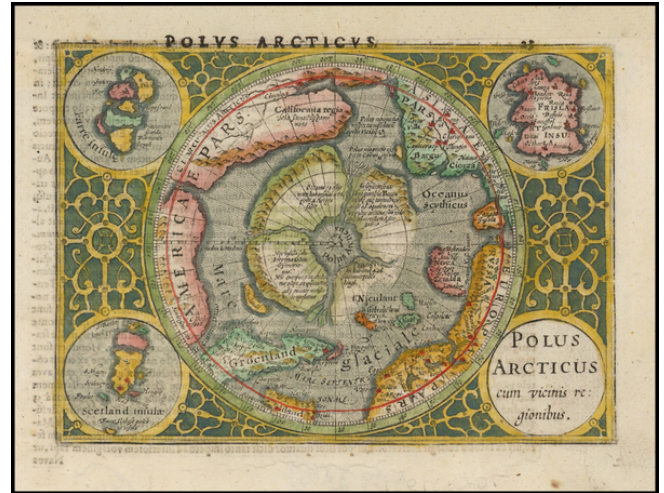
7407 La Jolla Boulevard
La Jolla, CA 92037

www.raremaps.com

(858) 551-8500
blr@raremaps.com

Polus Arcticus cum vicinis regionibus

Stock#: 49828
Map Maker: Mercator
Date: 1610 circa
Place: Amsterdam
Color: Hand Colored
Condition: VG
Size: 7.5 x 6 inches
Price: SOLD



Description:

Excellent early map of the North Polar regions, based upon early maps by Mercator and Hondius.

Shows the mythical land masses near the pole, the clearly navigable NW and NE passages, a massive California, as discovered by the Spanish, the Davis Straits, and marvelous detail in the NE coast of Asia, above the arctic circle. An excellent map for polar collectors.

The map is drawn from Mercator's world map of 1569, which included a large inset map of the North Polar regions. Mercator also issued a larger format map of the same region beginning in 1595, which was included in his *Atlas*.

Detailed Condition: